

Language Manual

Round Baler Variable Chamber

864, 960 & 990 ISOBUS



Introduction

After updating the controller software application via service ADVISOR™, it is required to load language files to operate the application in a language other than English.

There are two methods available to do this:

Option 1:

Use Service ADVISOR™
to add languages*

OR

Option 2:

Use display with USB
port or card slot



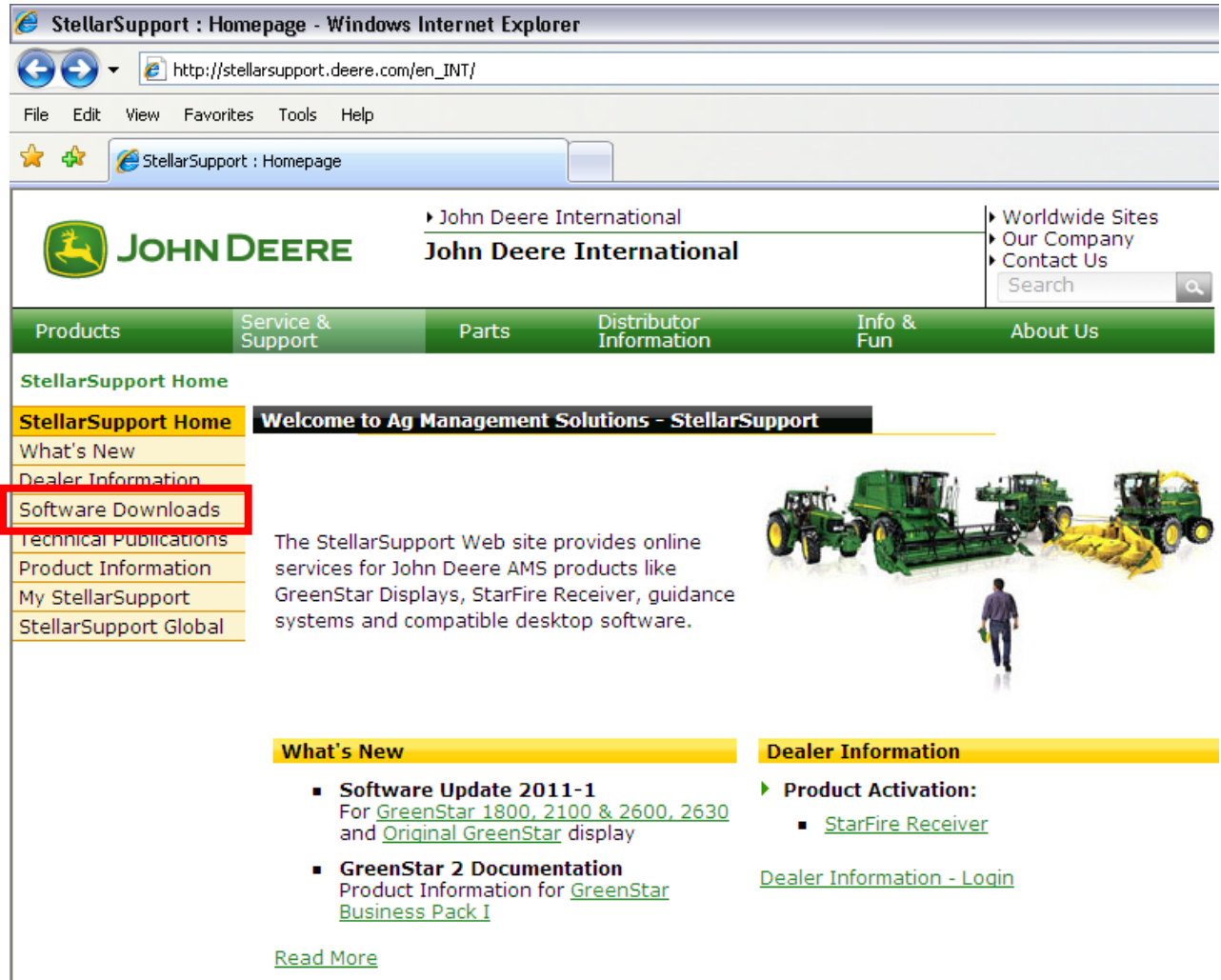
*Use Service ADVISOR™ to load language files if you do not have a display equipped with a card slot or USB port. Service ADVISOR™ can also be used even if you have a display equipped with a card slot or USB port.

Download languages files via Stellar Support

Note:

Languages files downloaded from Stellar Support are packed in an exe-file. Save exe-file to the computer.

Here →



StellarSupport : Homepage - Windows Internet Explorer

http://stellarsupport.deere.com/en_INT/

File Edit View Favorites Tools Help

StellarSupport : Homepage

JOHN DEERE

John Deere International

Worldwide Sites
Our Company
Contact Us

Search

Products Service & Support Parts Distributor Information Info & Fun About Us

StellarSupport Home

StellarSupport Home

What's New

Dealer Information

Software Downloads

Technical Publications

Product Information

My StellarSupport

StellarSupport Global

Welcome to Ag Management Solutions - StellarSupport

The StellarSupport Web site provides online services for John Deere AMS products like GreenStar Displays, StarFire Receiver, guidance systems and compatible desktop software.

What's New

- Software Update 2011-1
For [GreenStar 1800, 2100 & 2600, 2630](#) and [Original GreenStar](#) display
- GreenStar 2 Documentation
Product Information for [GreenStar Business Pack I](#)

[Read More](#)

Dealer Information

- Product Activation:
 - [StarFire Receiver](#)

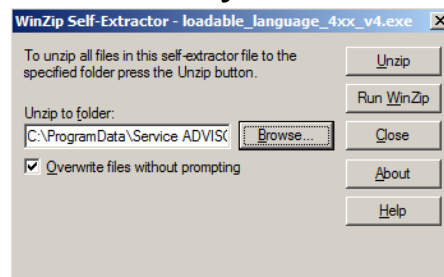
[Dealer Information - Login](#)

Option 1: Loadable Language Process Via Service ADVISOR™

1. Place language files in appropriate directory on Service ADVISOR computer
2. Connect the EDL to the diagnostic port, start Service ADVISOR, and start the ISOBUS File Server

1. Place language files in the appropriate directory on Service ADVISOR computer

a) Run the exe-file which will open the following dialog:



b) Click Browse button and navigate to one of the following directories:

On Windows XP Computers:

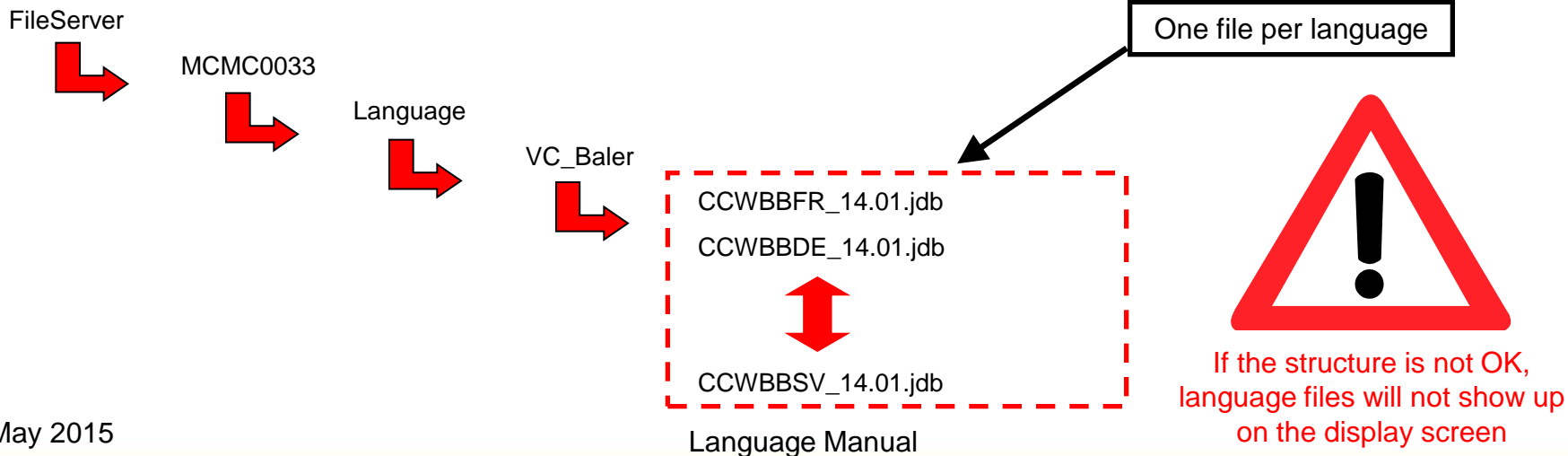
C:\Documents and Settings\All Users\Application Data\Service ADVISOR\

On Windows 7 Computers:

C:\ProgramData\Service ADVISOR\

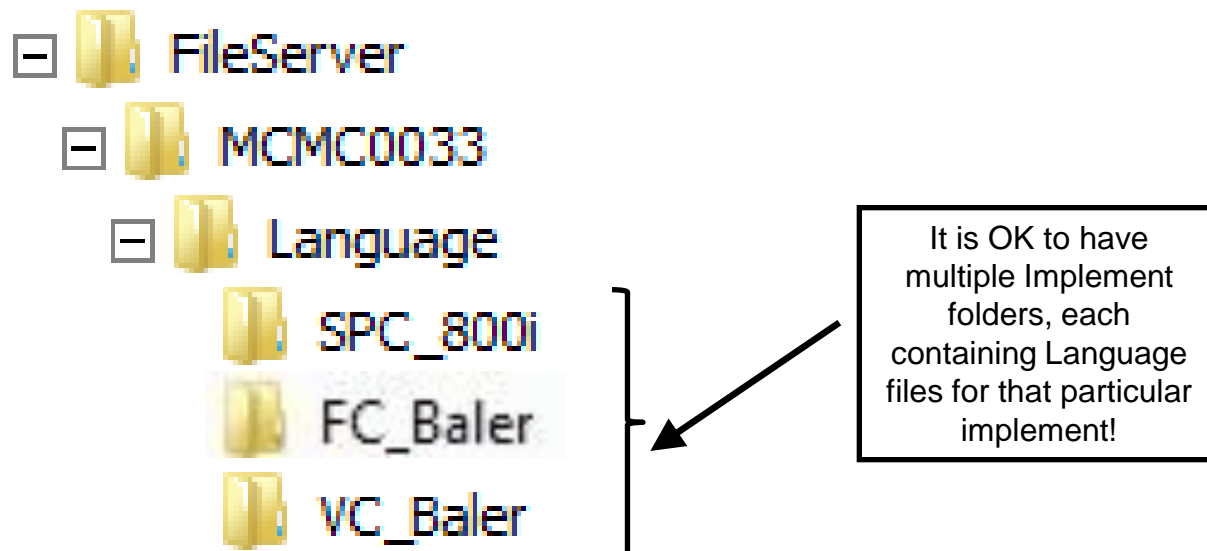
c) Click the Unzip button

Language files are automatically installed in compliance with the following structure:



A note about placing the language files in the directory structure:

1. If you are servicing both ISOBUS Balers and Sprayers, it is OK to have multiple sets of language files unzipped in the same File Server directory. There will be unique folders created for each model!
2. For example, in the following screen shot, three language file self-extracting exe's have been unzipped for one Sprayer AND two Baler models.
3. If you get a warning that the FileServer directory already exists, it is ok to overwrite existing files

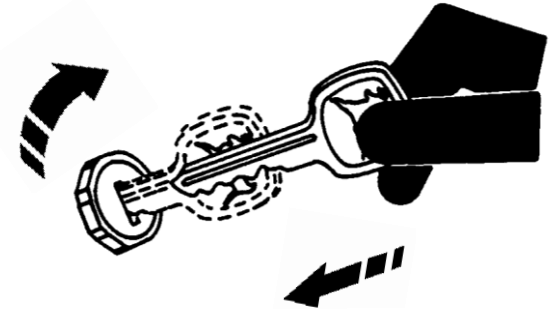


2. Connect the EDL to the diagnostic port (of tractor or in-cab harness), turn the key to RUN start Service ADVISOR, and start ISOBUS File Server.

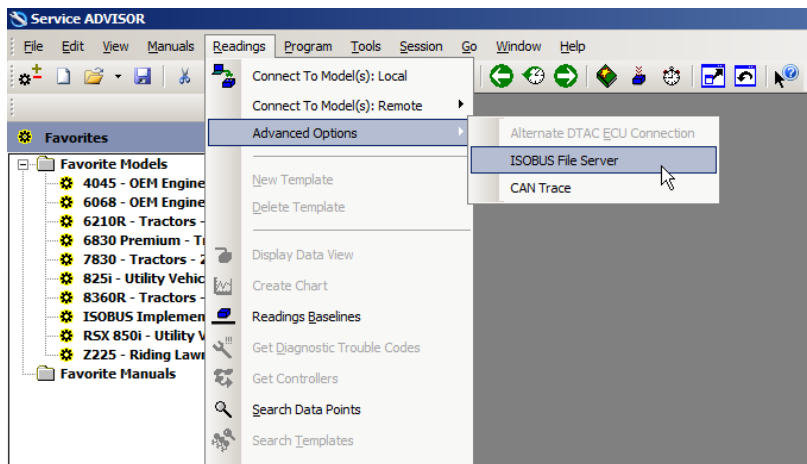
1



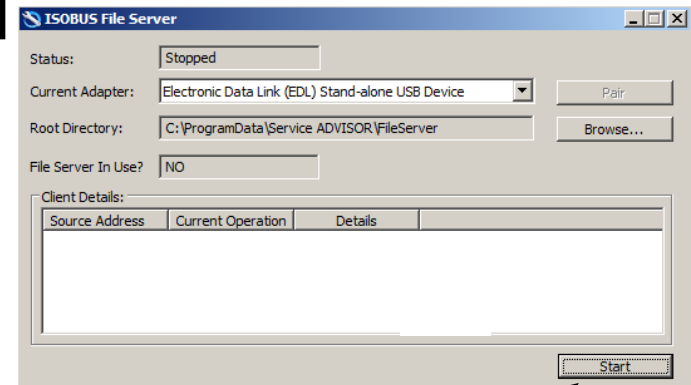
2



3

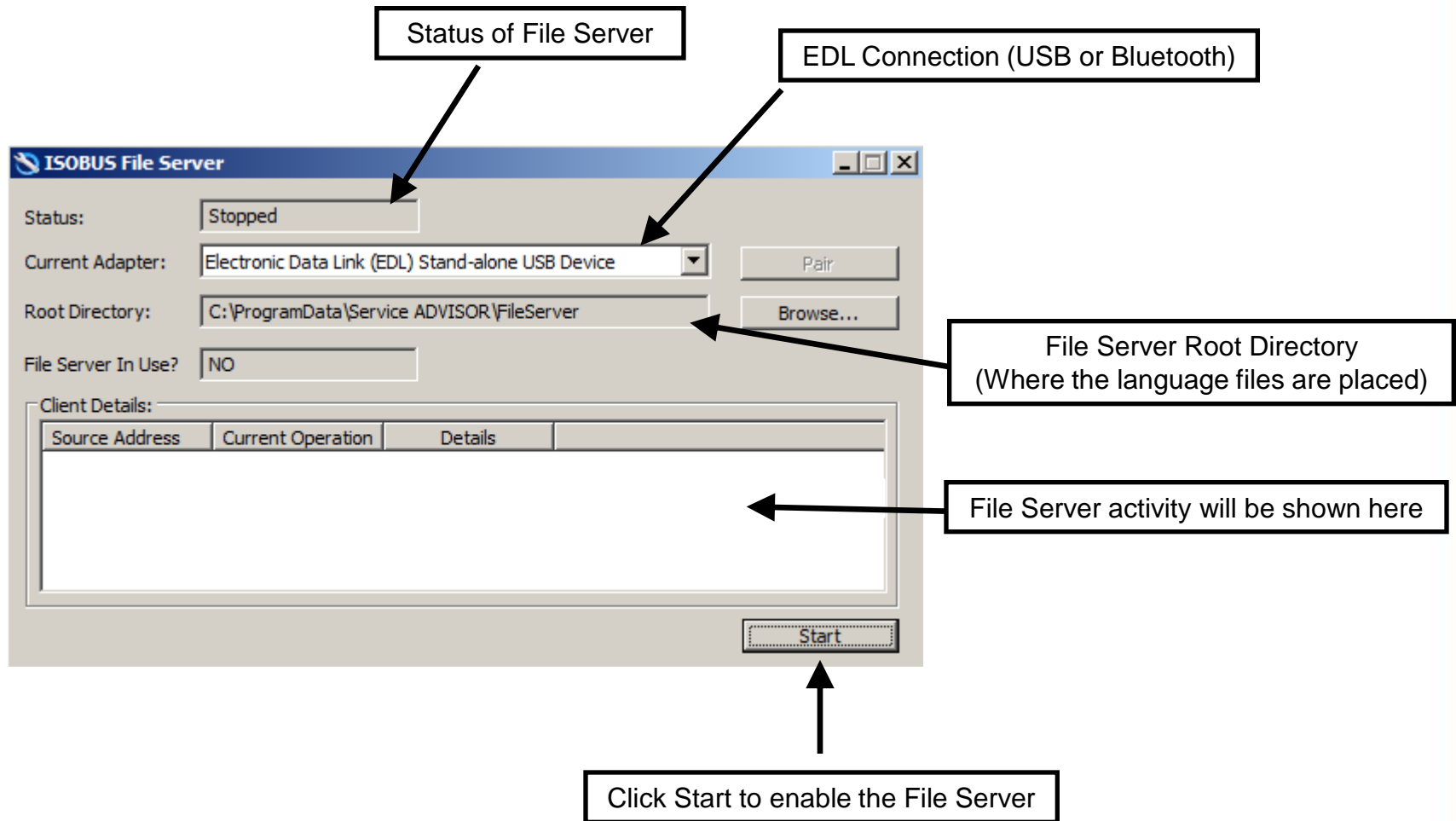


4



Click Start!

The ISOBUS File Server window in Service ADVISOR™



The screenshot shows the 'ISOBUS File Server' window with the following fields and controls:

- Status:** Stopped
- Current Adapter:** Electronic Data Link (EDL) Stand-alone USB Device
- Root Directory:** C:\ProgramData\Service ADVISOR\FileServer
- File Server In Use?:** NO
- Client Details:** A table with columns for Source Address, Current Operation, and Details.
- Buttons:** Pair, Browse..., and Start.

Callouts point to the following elements:

- Status of File Server:** Points to the Status field.
- EDL Connection (USB or Bluetooth):** Points to the Current Adapter dropdown.
- File Server Root Directory (Where the language files are placed):** Points to the Root Directory field.
- File Server activity will be shown here:** Points to the Client Details table.
- Click Start to enable the File Server:** Points to the Start button.

Option 2: Use display with USB port or card slot

1. Place languages files on CompactFlash card or USB flash drive
2. Connect the display equipped with USB port or card slot

1. Place languages files on CompactFlash card or USB flash drive

Run the exe-file, select the CompactFlash drive or USB flash drive and unzip files.
Languages files are automatically installed in compliance with the following structure:

FileServer

↳ MCMC0033

↳ Language

↳ VC_Baler

↳ CCRBBFR_14.01.jdb

CCRBBDE_14.01.jdb

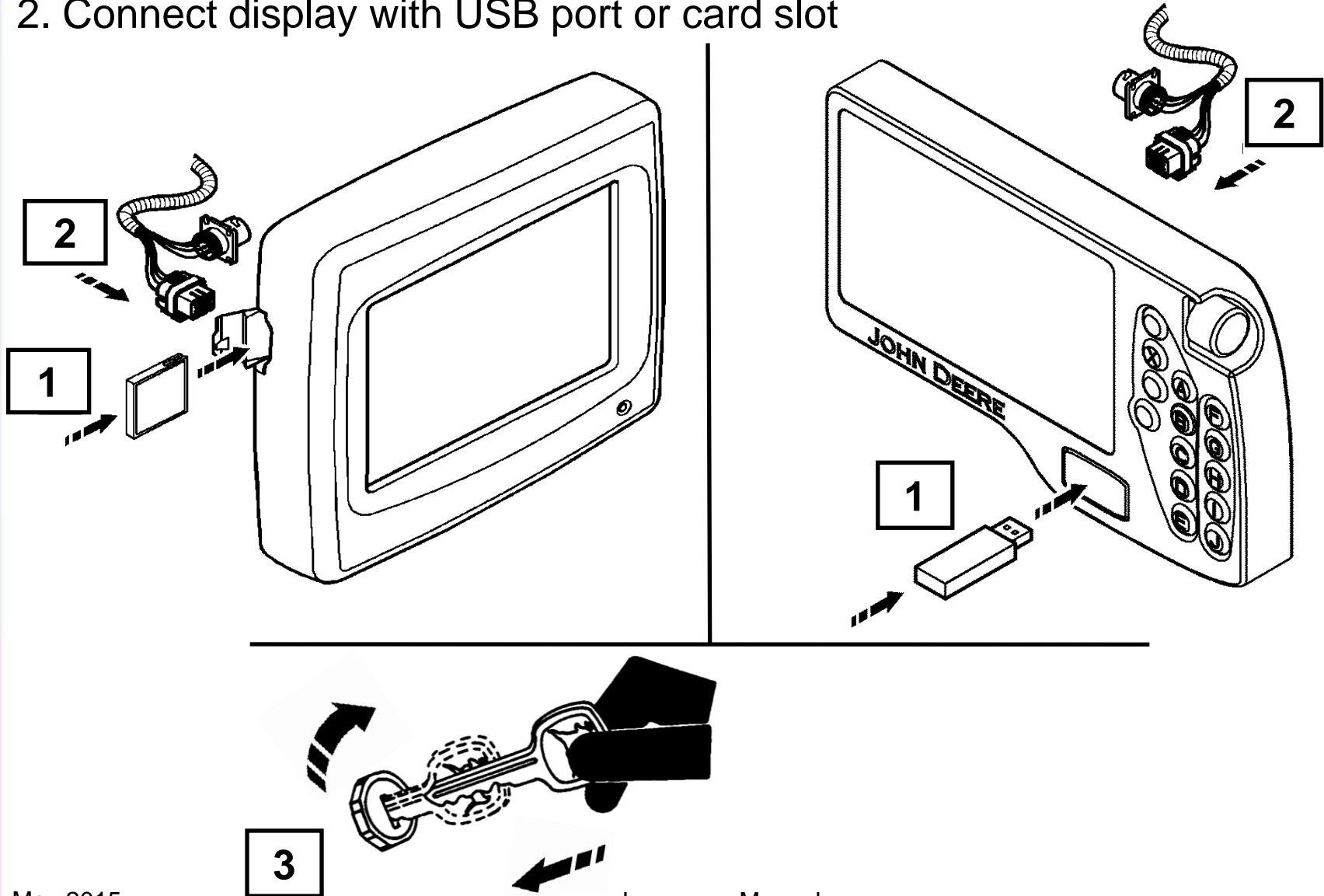
CCRBBSV_14.01.jdb

One file per language



If the structure is not OK, languages files will not show up on the screen

2. Connect display with USB port or card slot

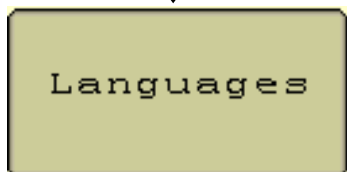
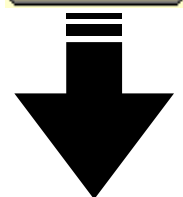
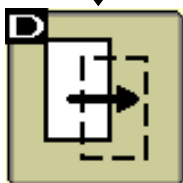
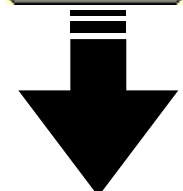


Load required languages

After have started ISOBUS File Server or connected USB flash drive or card in display, load required languages from languages page of baler application.



Acces loadable languages page from the baler application home page.



Language(s)	Available	Version	File Size
	Dansk	14.01	21k
	Deutsch	03.01	20k
	Deutsch	08.01	19k

Language(s)	Installed	Version	File Size

Exit Space Available: 127KB

Compatible Version: 14.xx

Languages available

Languages installed on the controleur

4°/ Load required languages

Languages

Language(s)	Available	Version	File Size
▲	Dansk	14.01	21k
	Deutsch	03.01	20k
▼	Deutsch	14.01	19k

Language(s)	Installed	Version	File Size
▲	Dansk	14.01	21k
▼			

Exit

Space Available: 106KB

Compatible Version: 14.xx

Push buttons to scroll

Push needed language
Ex: Dansk

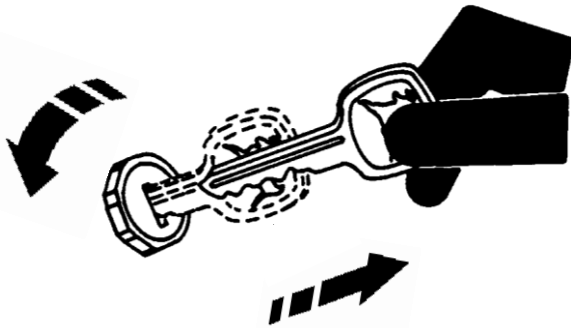
Some time after language is added on the controller

Check that language version and software compatible version match

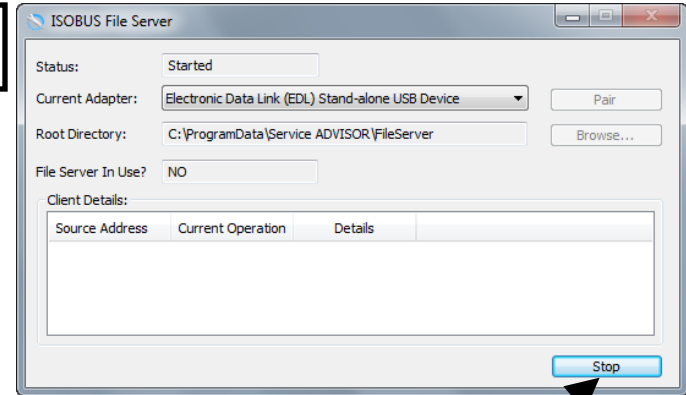
Now the language is now loaded, you can disconnect ISOBUS File Server, USB flash drive or card.

Option 1 :Turn the key to STOP, stop ISOBUS File Server and disconnect the EDL of the diagnostic port.

1



2



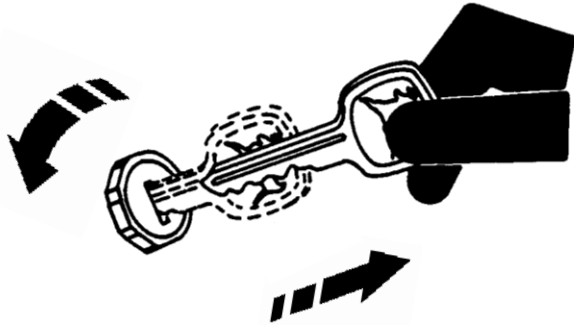
Click Stop !

3



Option 2 : Turn the key to STOP and disconnect the USB flash drive or CompactFlash card.

1



2

